



HAVERLAND®



User Manual



amazon alexa

1. What is Amazon Alexa?

Amazon's voice assistant allows access to different services and functions through voice commands.

It can be used on different types of devices, including mobile phones, smart watches, televisions and Amazon Echo.



Amazon Echo

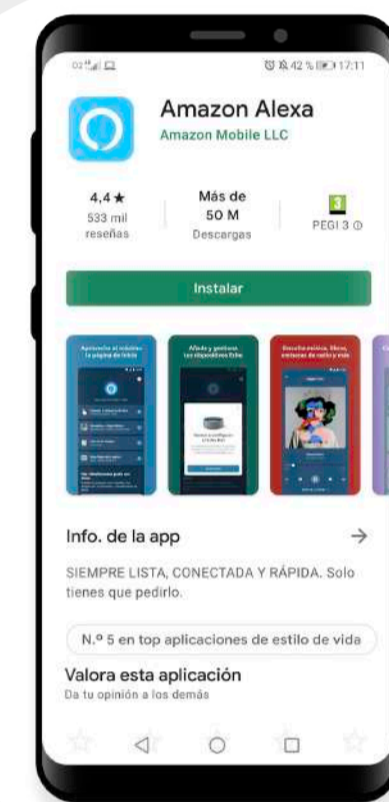


amazon alexa

2. Installing the APP

To use Amazon Echo with the Haverland radiators, you need to use the Amazon Alexa APP.

You just need to go to your app store and install it.



It's free to install.

3. Pairing your radiator with Amazon Alexa.

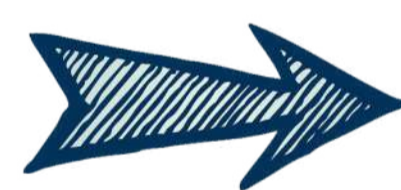
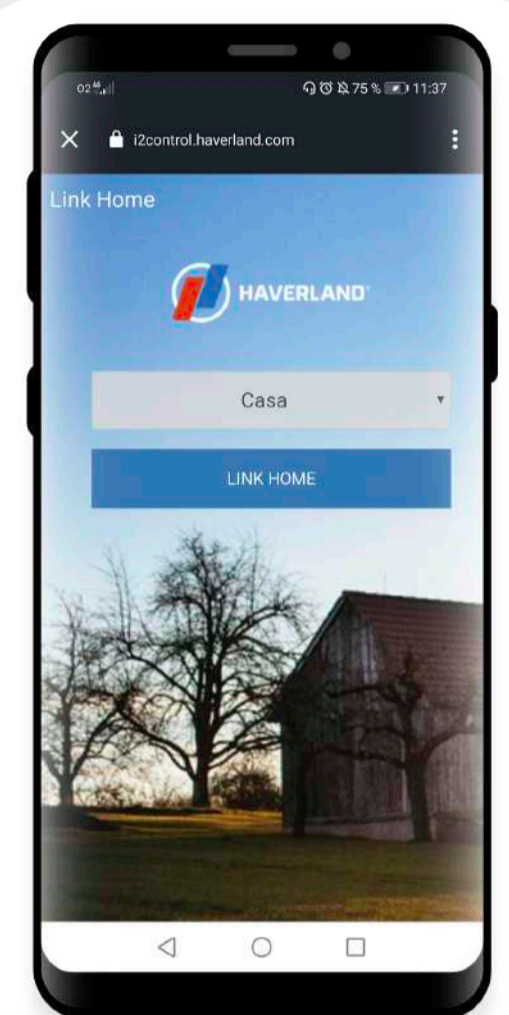
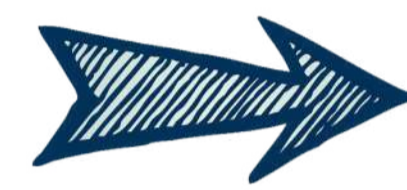
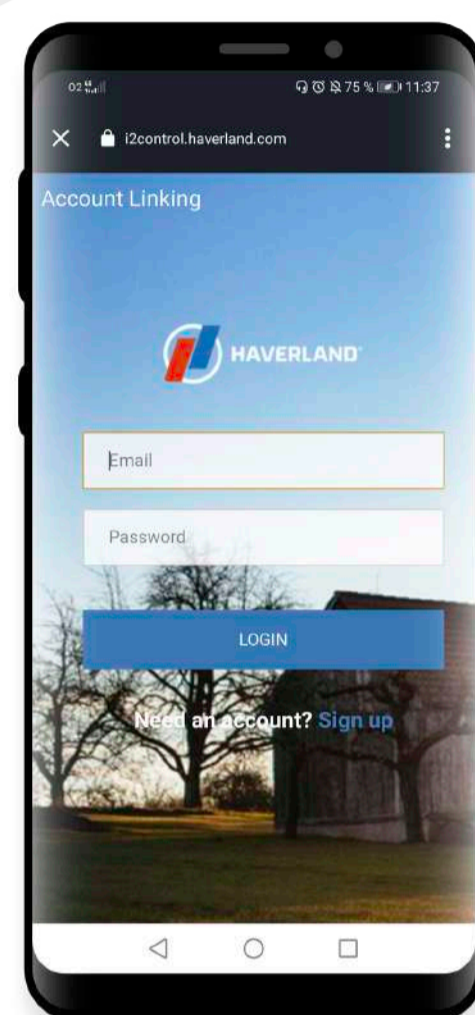
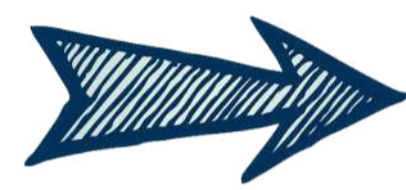
Once the Amazon Alexa application is installed, the next step will be to open it. If it is the first time, you will need to register as a user.

Once registered, the APP will ask you to set up a new device, click on select devices and then proceed to select "My Skills" from Digital Home.



Next, a list will appear with the different devices (skills) that can be added. To continue with the process, the next step will be to search for and select **Haverland**.

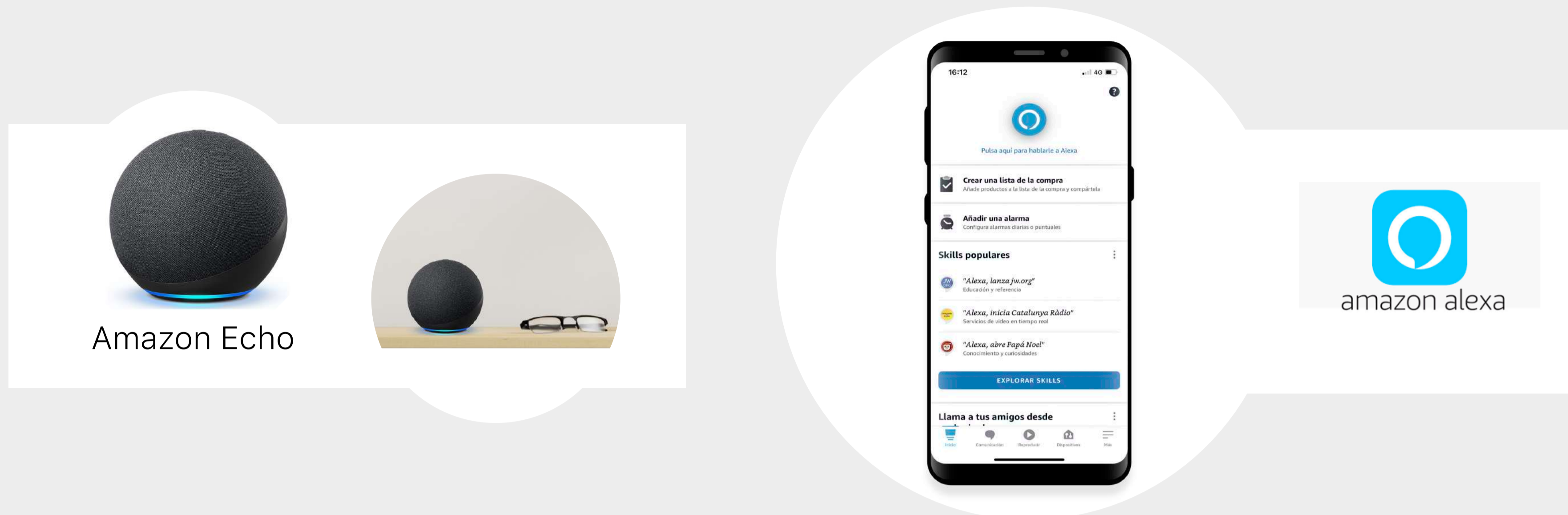
Enter the username and password you used on the "Haverland App". Then, select the name of the property you wish to pair with the Amazon Alexa account. Once selected, go to **Link Home**. Your Haverland account will be linked.



Once paired, you can then control your Haverland radiators through Amazon Echo or from the Amazon Alexa app. This skill is available in Spanish, English, French, German and Italian.

- The command word is not necessary: "Alexa, ask for heating control...", saying "Alexa, switch off the kitchen..." is enough.
- The heaters can be named as you see fit.
- The commands do not have to be said in any specific way, therefore, they can be said in several ways. For example, "Alexa, I want 20 degrees in the living room", "Alexa, set the living room to 20 degrees", etc.
- You can create your own bespoke schedule automatically from the Alexa APP.
- Groups commands can be created with other Alexa compatible devices such as lights so the compatible devices will follow one command at the same time. For example, "Alexa, turn off the living room".

4. Control through the Voice Assistant or from the Alexa app.



Control your radiators from the Amazon voice assistant or from the Amazon Alexa application.

There is no unique way to give commands. If you only have one radiator in your house, there is no need to say the name, you can refer to it as "heating". Some of the commands that you can use:

- Switch off a radiator, or all radiators in the house:

"Alexa, switch off the living room", "Alexa, I want to switch off the kitchen", etc.

- Switch on a radiator, or all radiators in the house: They connect in Auto mode.

"Alexa, switch on the living room", "Alexa, I want to switch on the kitchen", etc.

- Set "Comfort" Heat mode: Sets the manual mode to the comfort temperature set on the radiator.

"Alexa, set heat mode in the kitchen", "Alexa, set the kitchen to heating mode", etc.

- Set "Economy" economic mode: Sets the manual mode to economy temperature set on the radiator.

"Alexa, set economic mode in the kitchen", "Alexa, set the kitchen to economic mode", etc.

- Set Automatic mode:

"Alexa, set automatic mode in the kitchen", "Alexa, set automatic mode in the kitchen", etc.

- Set Temperature:

"Alexa, set it to 20 degrees in the living room", "Alexa, set the kitchen to 20 degrees", etc.

- Temperature settings: If give a command like "Raise the temperature" or "Lower the temperature" without specifying what temperature you would like to set it on (example 21°C), it will raise or lower the actual room temperature settings by 1°C.

"Alexa, lower the temperature in the living room", "Alexa, raise the temperature in the living room", "Alexa, raise the temperature in the kitchen by 3 degrees", etc.

- Consult temperature:

"Alexa, what is the temperature in the kitchen?"

WARNING: These instructions have been made based on the Amazon application, over which we have no control and that may change. Amazon provides information on how to perform the steps to pair with the user account, as well as manage the devices with the Smart Home profile.
This manual is for guidance only.



www.haverland.co.uk



MARSAN INDUSTRIAL, S.A.
Avda. San Martín de Valdeiglesias, Km. 2,2
28925 Alcorcón. Madrid. Spain
Tel. +34 91 6427020
Fax. +34 91 6191950
www.haverland.com
i2control@haverland.com